

●Characters in the story: Match each picture with the correct name.

①Orihime ( )      ②Hikoboshi ( )      ③Kamisama ( )

A



B



C



●Words search: Find these words in the maze. They may be written horizontally, Vertically or diagonally. Cross the words out as you find them.

Star festival (tanabata)	Weaver princess (Orihime)	Star (hoshi)
Cowherd star (Hikoboshi)	Good bye (sayounara)	Cow (ushi)
The Milky Way (amanogawa)	To like (suki)	God( kamisama)

ひ	こ	ぼ	し	さ	あ
た	す	ね	ち	よ	ま
な	お	き	が	う	の
ば	う	り	つ	な	が
た	ほ	し	ひ	ら	わ
か	み	さ	ま	め	あ

●Quiz:

**What do Orihime and Hikoboshi do?**

- |                              |                          |
|------------------------------|--------------------------|
| A Orihime works the loom.    | B Orihime sells clothes. |
| C Hikoboshi is a cow herder. | D Hikoboshi is a farmer. |

**Why do they seem happy?**



**Why is he angry? Who is he angry with?**



**Why are they crying?**



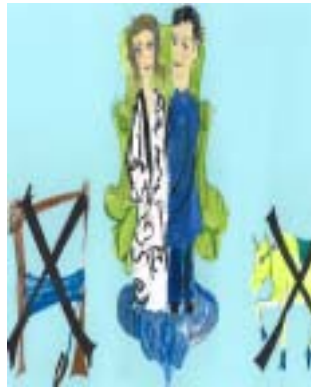
● Listen to the story again and rearrange the pictures to match the order of the story.

( A ) → (       ) → (       ) → (       ) → (       ) → (       ) → ( G )

A



B



C



D



E



F



G



Trace then copy the following Hiragana.

(Occupation)

に	な	り	た	い
に	な	り	た	い
に	な	り	た	い

Let's try to write what you want to be on the tanzaku strip using "Occupation List"! (Example)

