

# Minakata Kumagusu and London

International Workshop  
Dedicated to Dr Carmen Blacker (1924-2009)

Friday, 19 February 2010  
10:30 – 17:30, Room 4418  
Russell Square Campus, SOAS

## Workshop Programme

Introduction 10:30 - 11:00

Presentations 1 11:00 – 12:20

Ryugo Matsui (Ryukoku University)  
Minakata Kumagusu and the British Museum

Yoshiya Tamura (Minakata Archives)  
English essays of Kumagusu contributed to *Nature*  
and *Notes and Queries*

Lunch Break 12:20-13:30

Presentations 2 13:30 – 15:30

Anthony Boussemart (EFEO)  
Dogi Horyu and mantra Buddhism

Naoji Okuyama (University of Koyasan)  
Correspondence between Kumagusu and Dogi Horyu

Kazuaki Komine (Rikkyo University)  
Kumagusu and the comparative studies of folktale

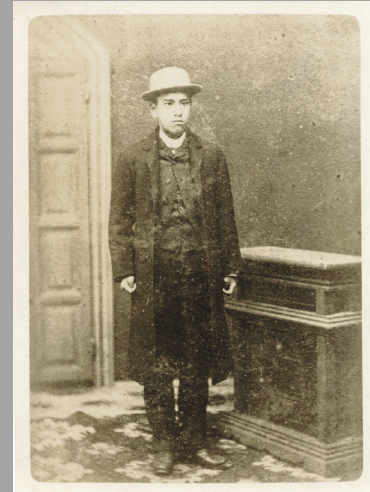
Coffee break 15:30-16:00

Round Table Discussion 16:00-17:30

Saturday, 20 February, 10:00-16:00  
Excursion following the footsteps of Kumagusu in  
London (open event, free participation)

This workshop is dedicated to Dr Carmen Blacker (1924-2009), a distinguished scholar of Japanese religion. Dr Blacker was awarded the Minakata Kumagusu Prize by Tanabe City in 1997 for introducing the works of Minakata to English readers.

For further information on this event, please contact:  
Ryugo Matsui: [rmatsui@world.ryukoku.ac.jp](mailto:rmatsui@world.ryukoku.ac.jp)



MINAKATA Kumagusu (1867-1941) lived in London from 1892 to 1900 after his five year stay in the US and Cuba. He was very active in the academic society there, contributing 51 English essays to *Nature* magazine and 323 to *Notes and Queries*, including those written after his return to Japan. Although Minakata worked solely in Tanabe, Wakayama, relatively separated from mainstream Japanese academics in the latter half of his life, he is now regarded as a pioneer of comparative Folklore Studies, Buddhist Studies, History of Science, as well as of Nature Conservation, based on his ecological research on wild forests. Such achievements are all deeply rooted in the academic influences he received during his London days. This workshop is the first international attempt to focus on the relation between his experiences in London and his later thoughts, based on the results of the researches on his figure recently conducted in Japan.